

**THIS QUICK TUTORIAL
WILL GUIDE YOU
THROUGH THE STEPS
ON HOW TO CHANGE
PRE AND POST PURGE
TIMINGS ON A
GENISYS CONTROL**

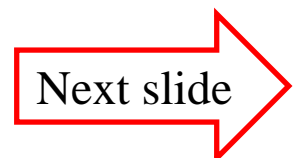
In this example we will change a GeniSys 7505A 0000 Control to a 7505P 152M control in a few easy steps.

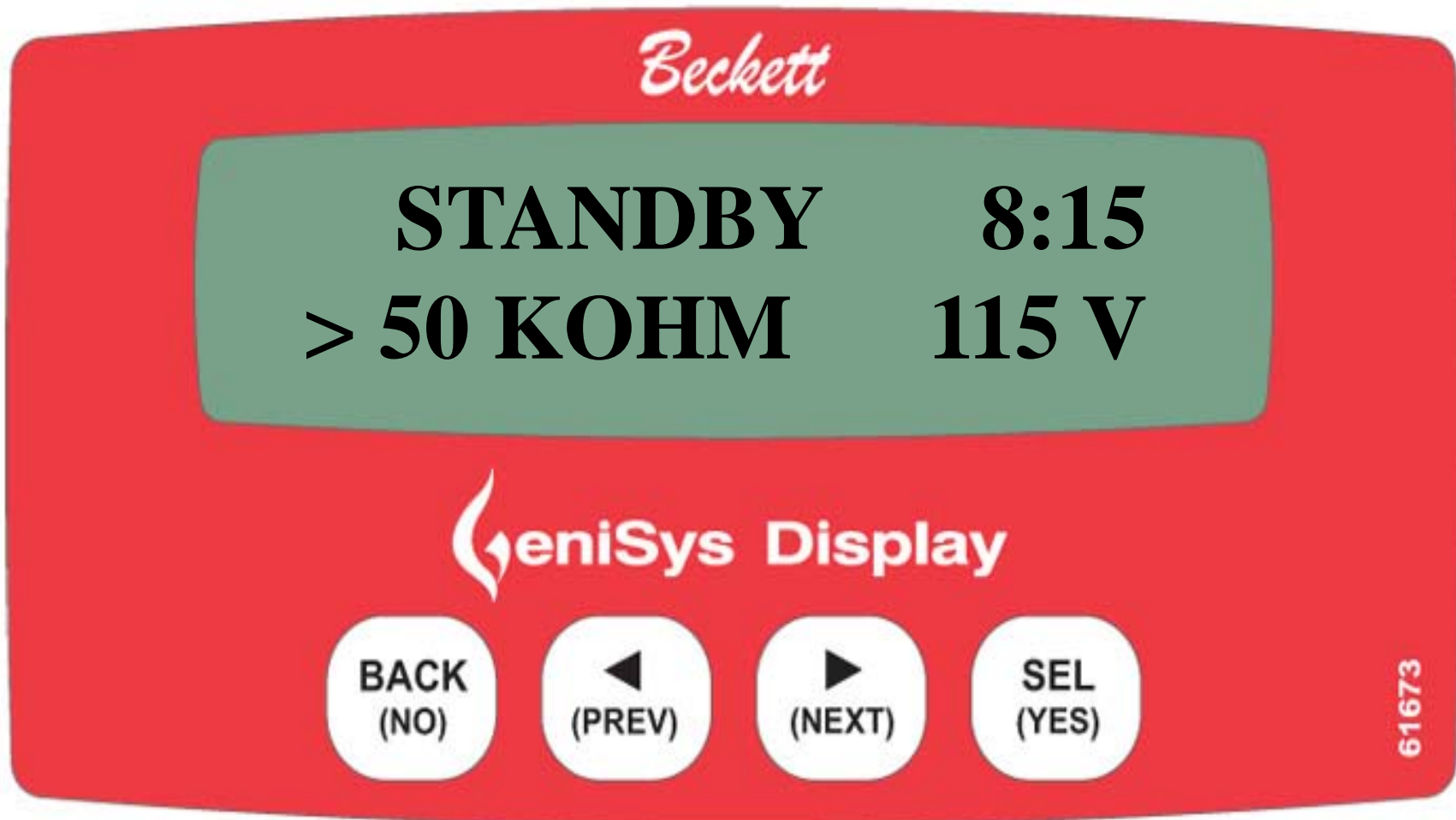


Next slide



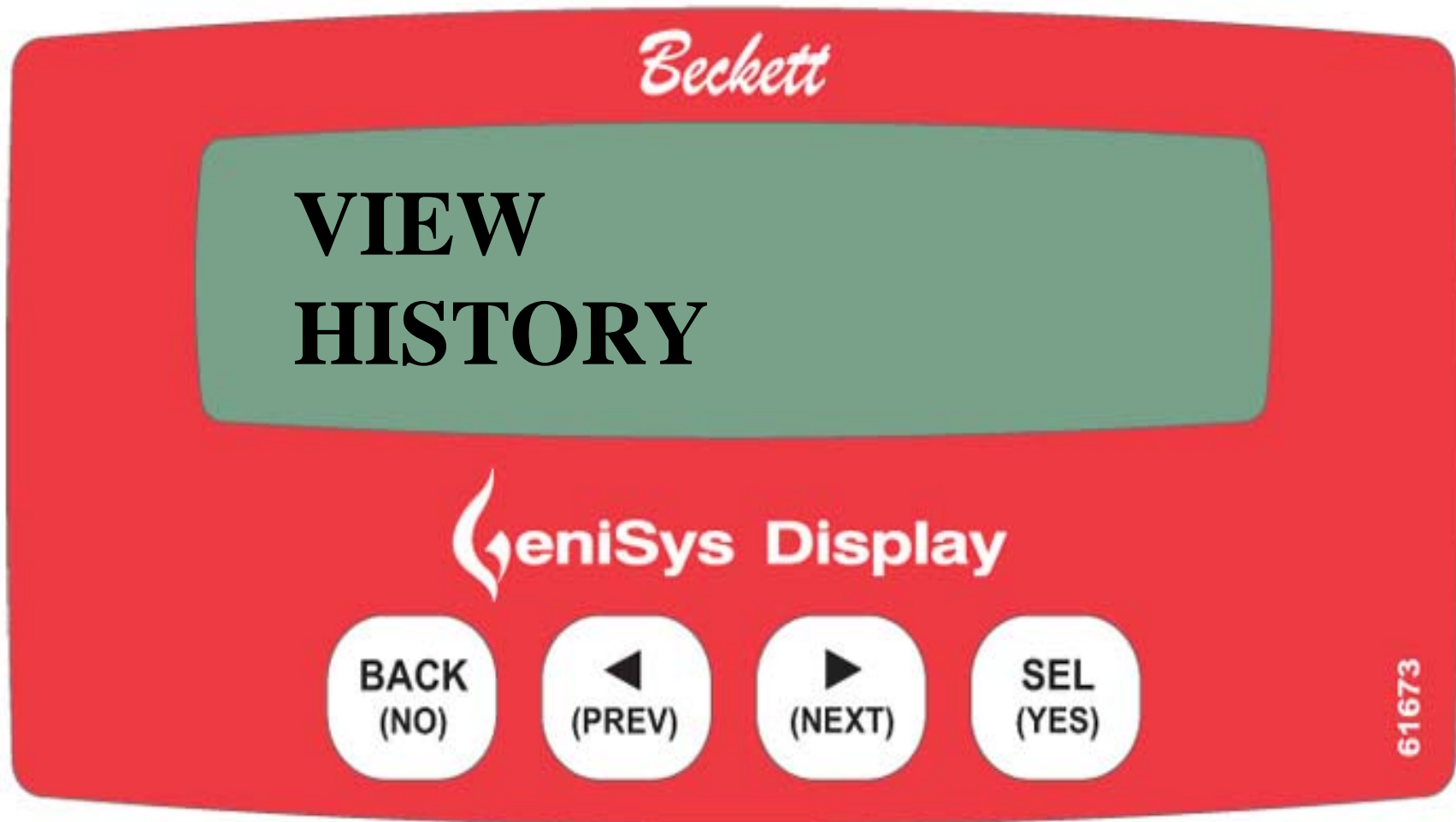
Begin by plugging in the Contractors Tool.





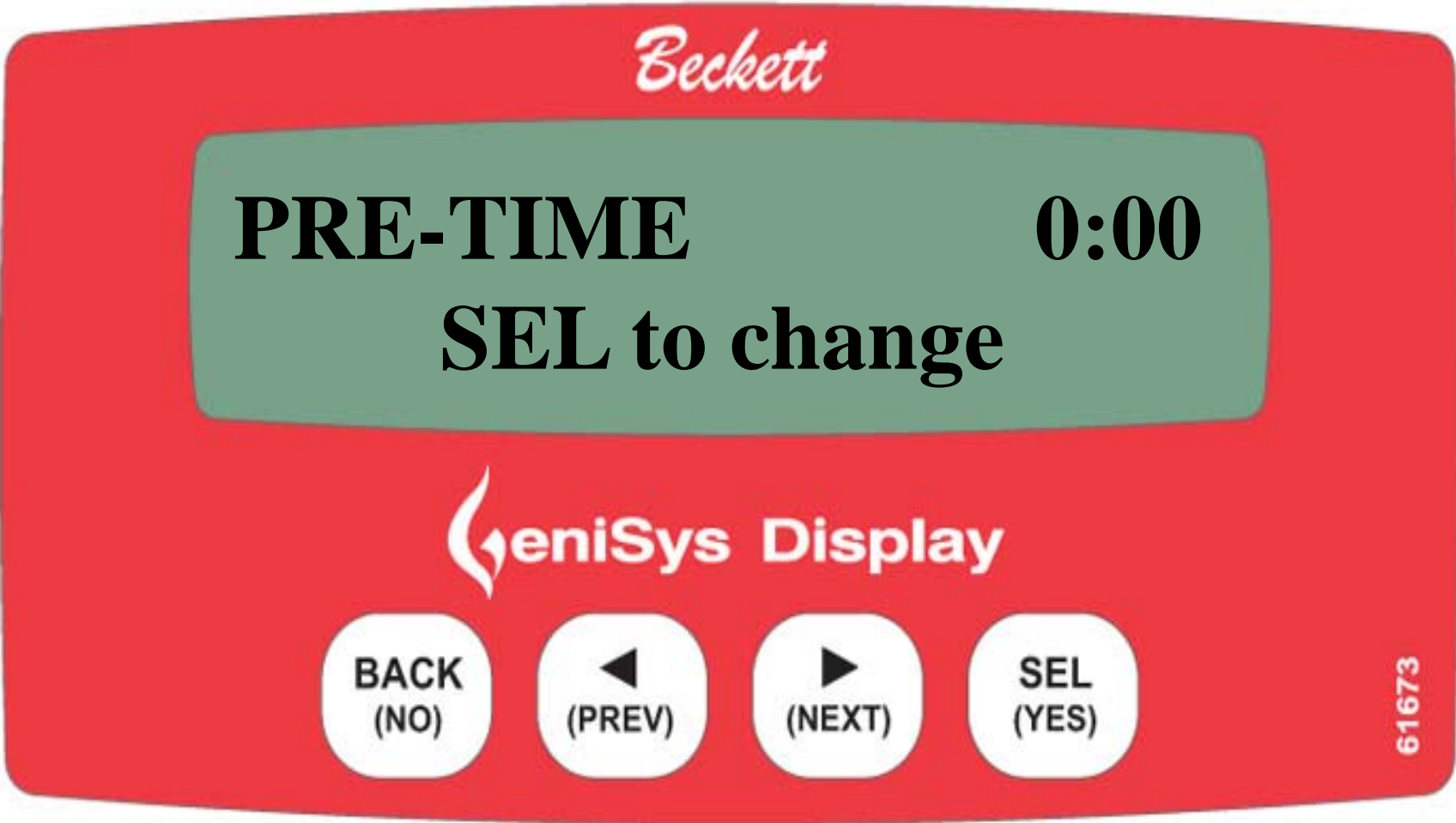
PRESS THE NEXT KEY

Next slide



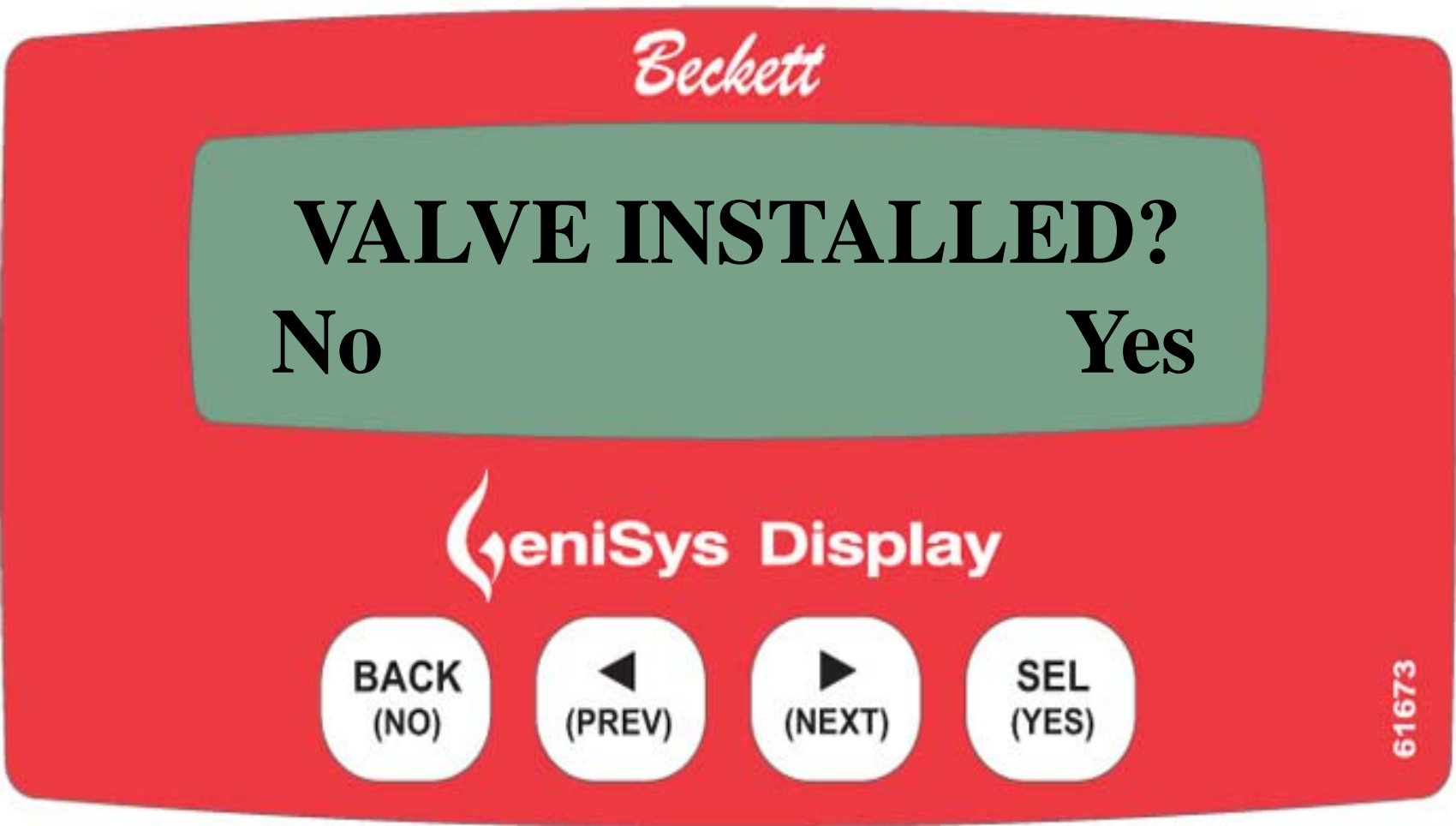
**PRESS AND HOLD THE NEXT KEY FOR 3
SECONDS OR UNTIL THE SCREEN CHANGES**

Next slide

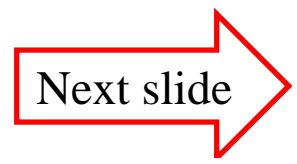


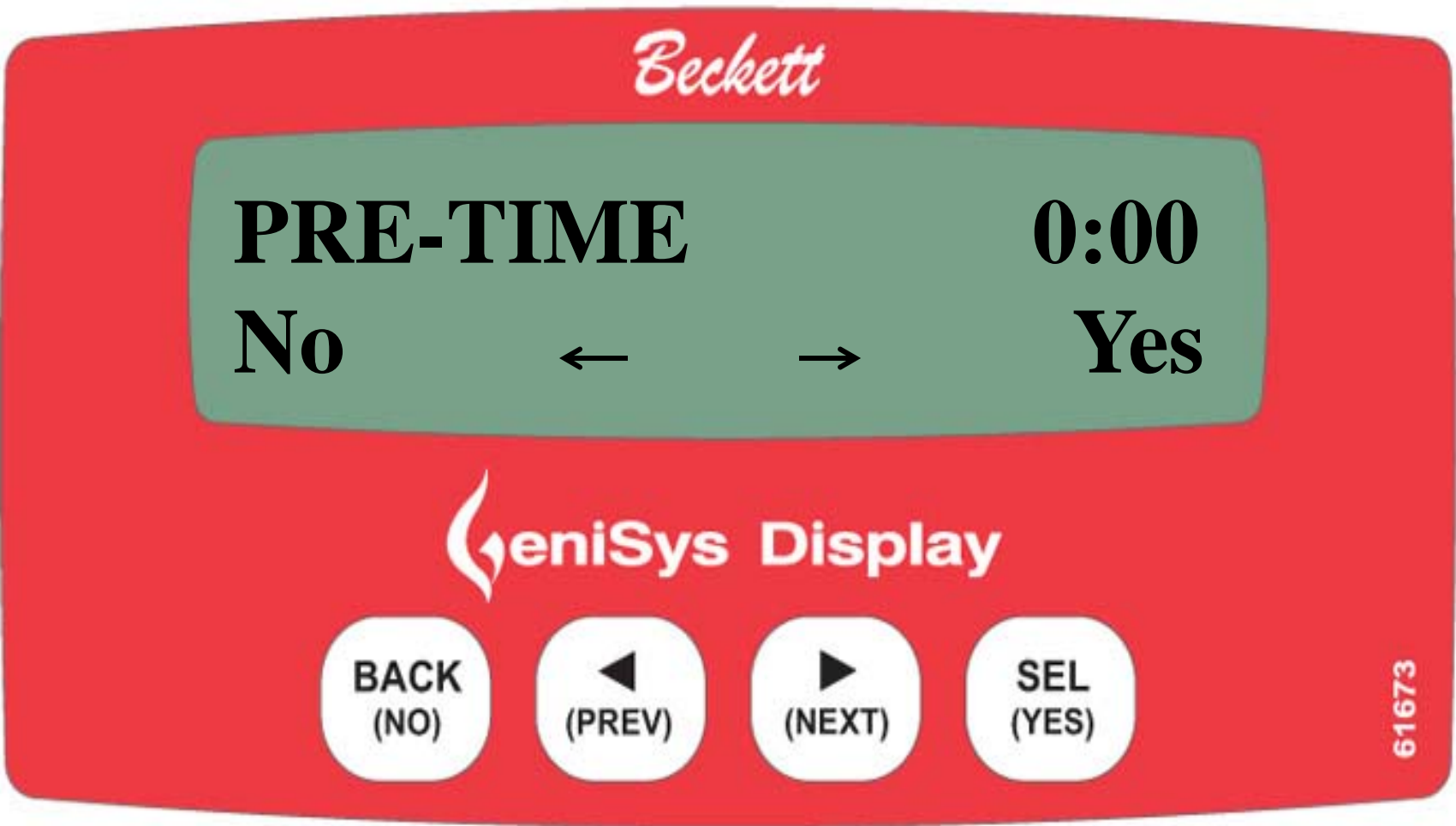
PRESS THE SEL/YES KEY





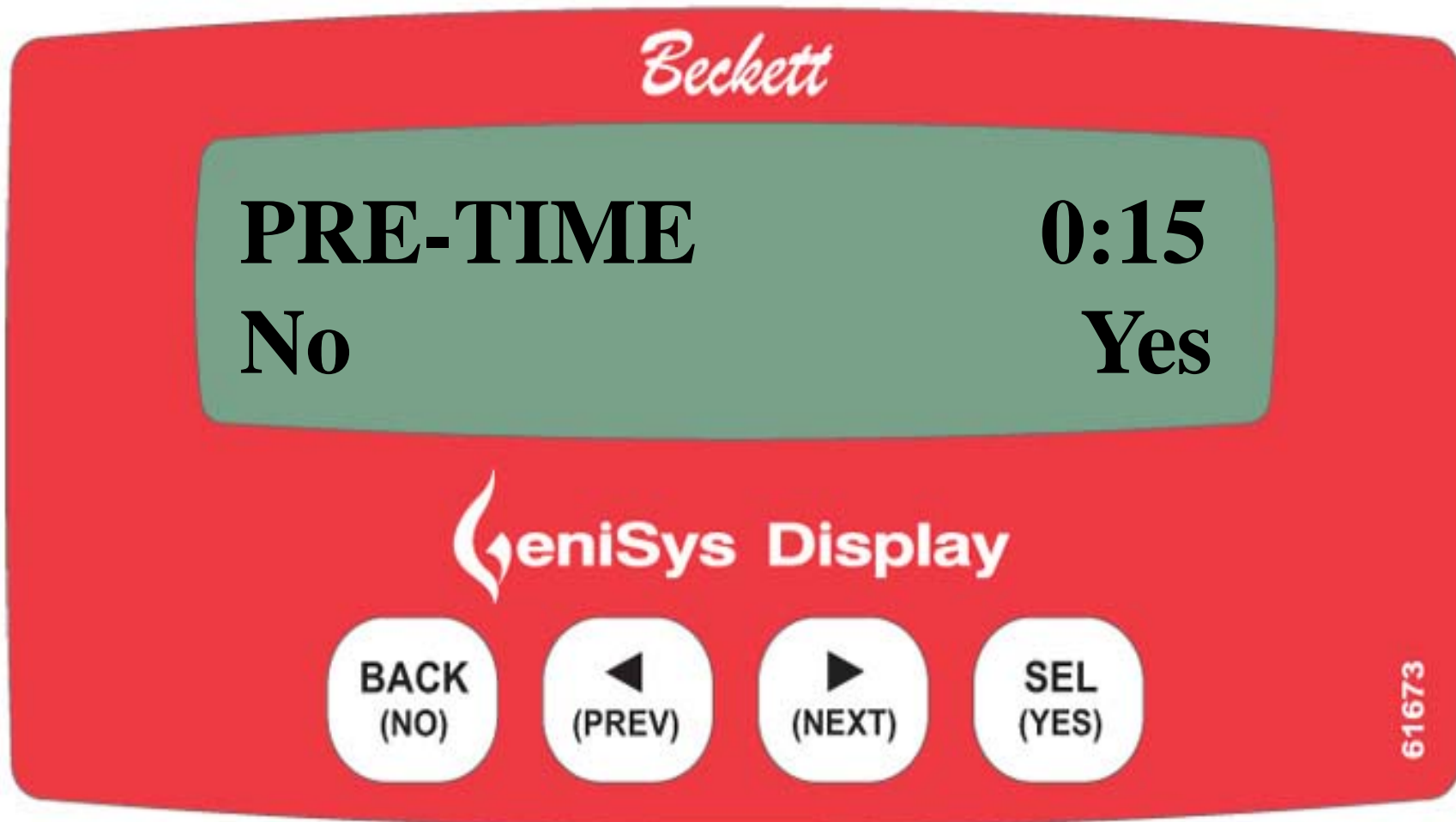
PRESS YES IF AN OIL VALVE OR CLEAN CUT PUMP IS INSTALLED





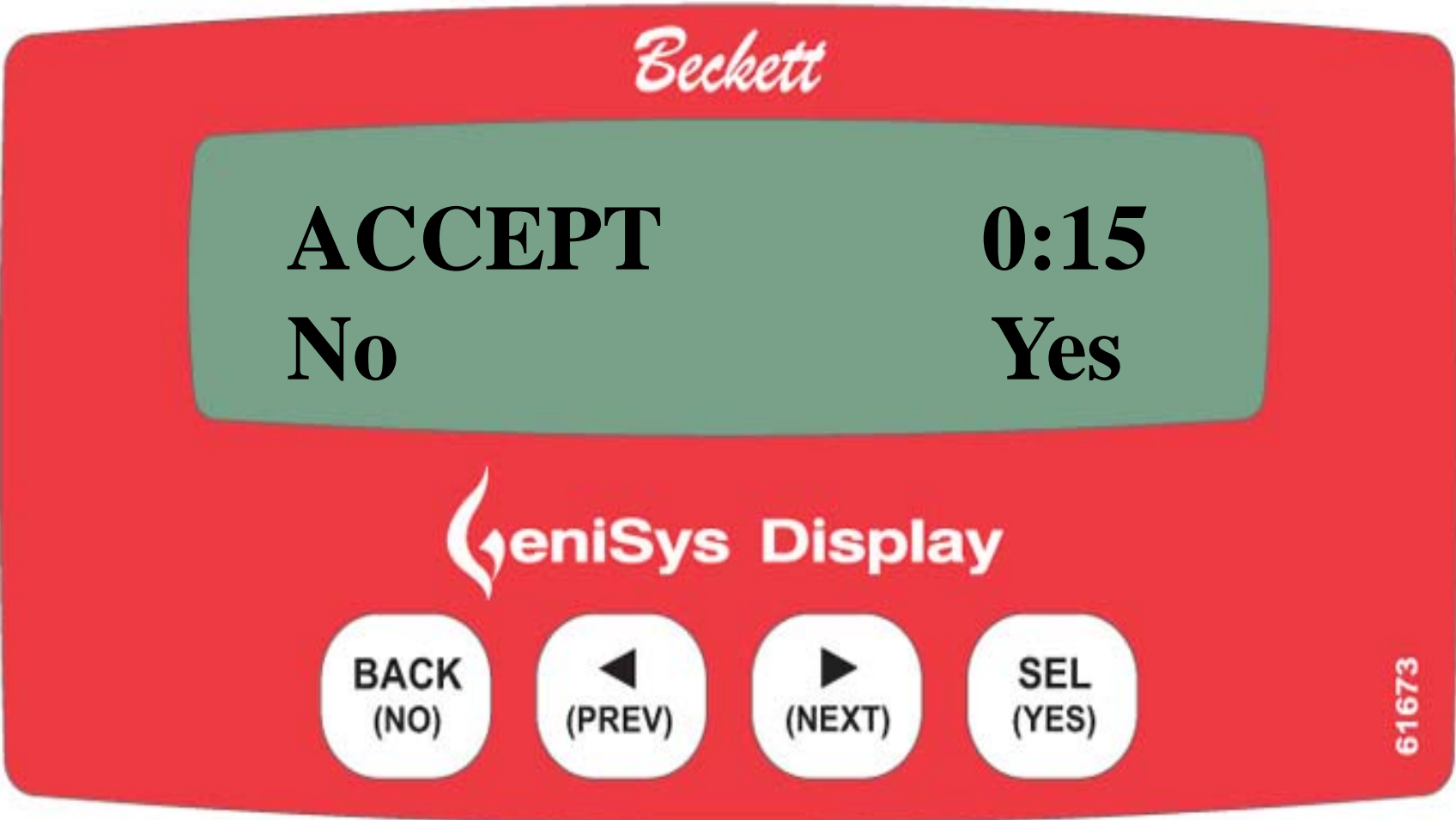
**PRESS THE NEXT KEY TO SET THE
PRE PURGE TIMING**





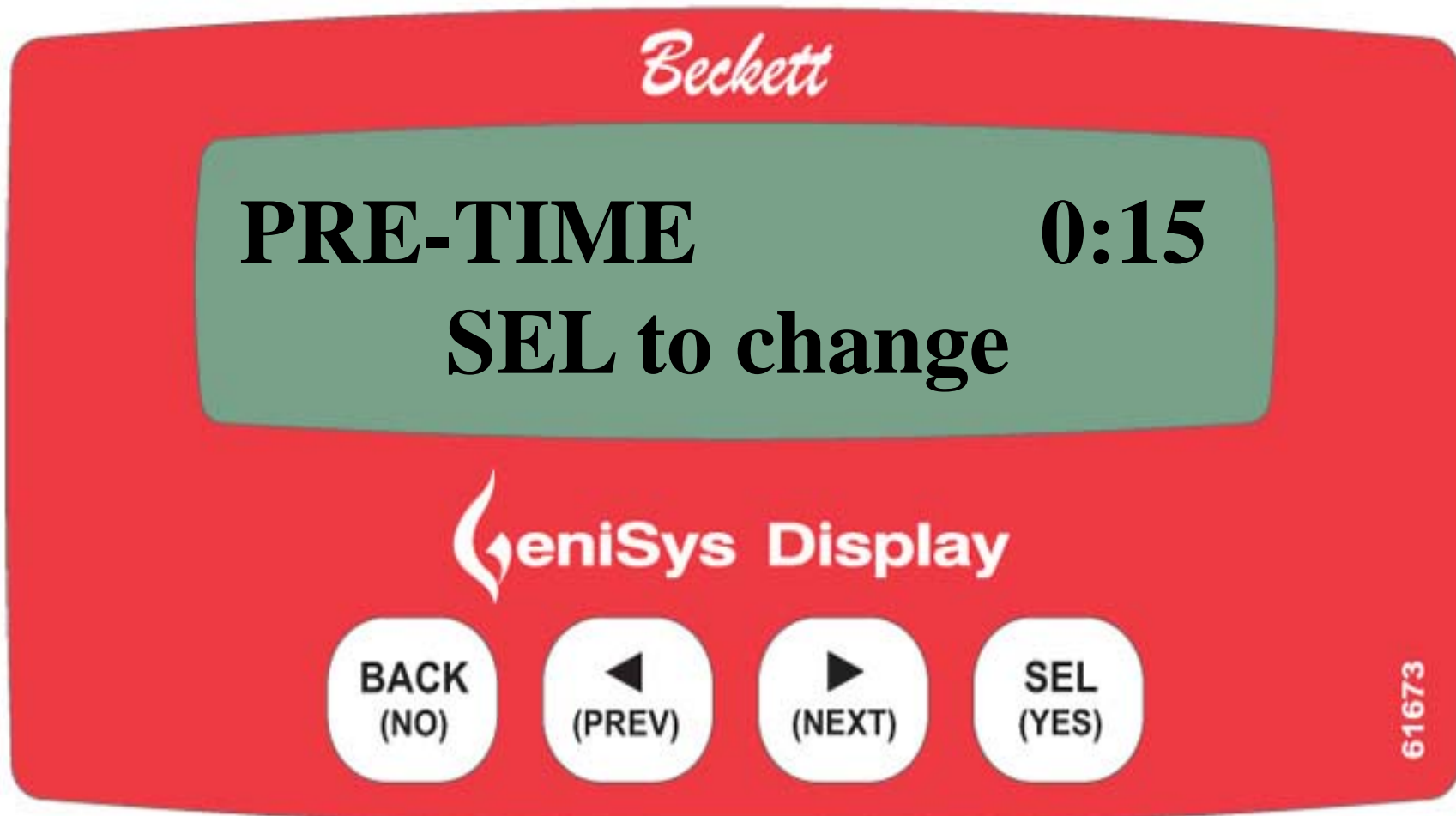
PRESS THE SEL/YES KEY





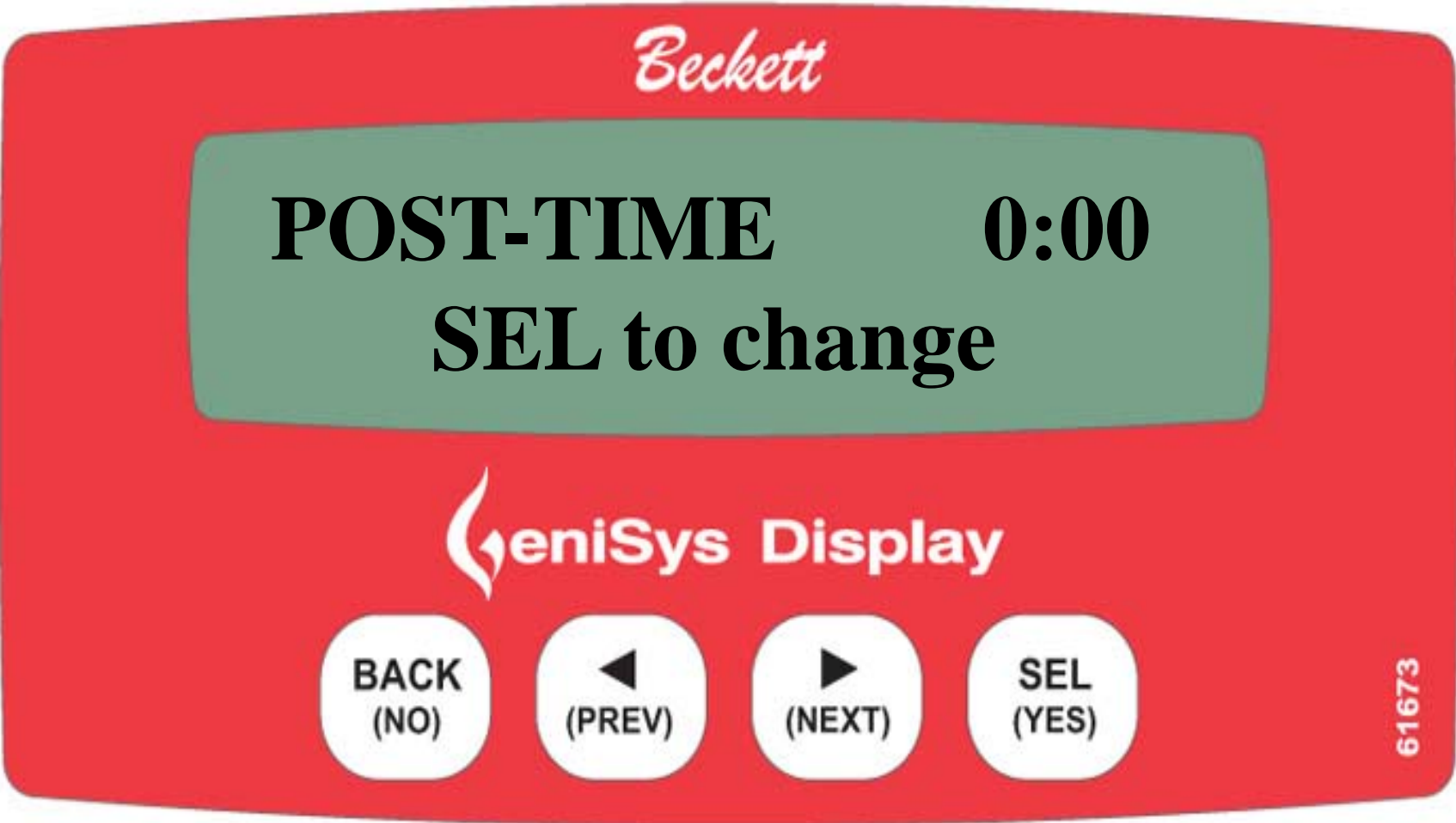
ACCEPT BY PRESSING THE YES KEY AGAIN





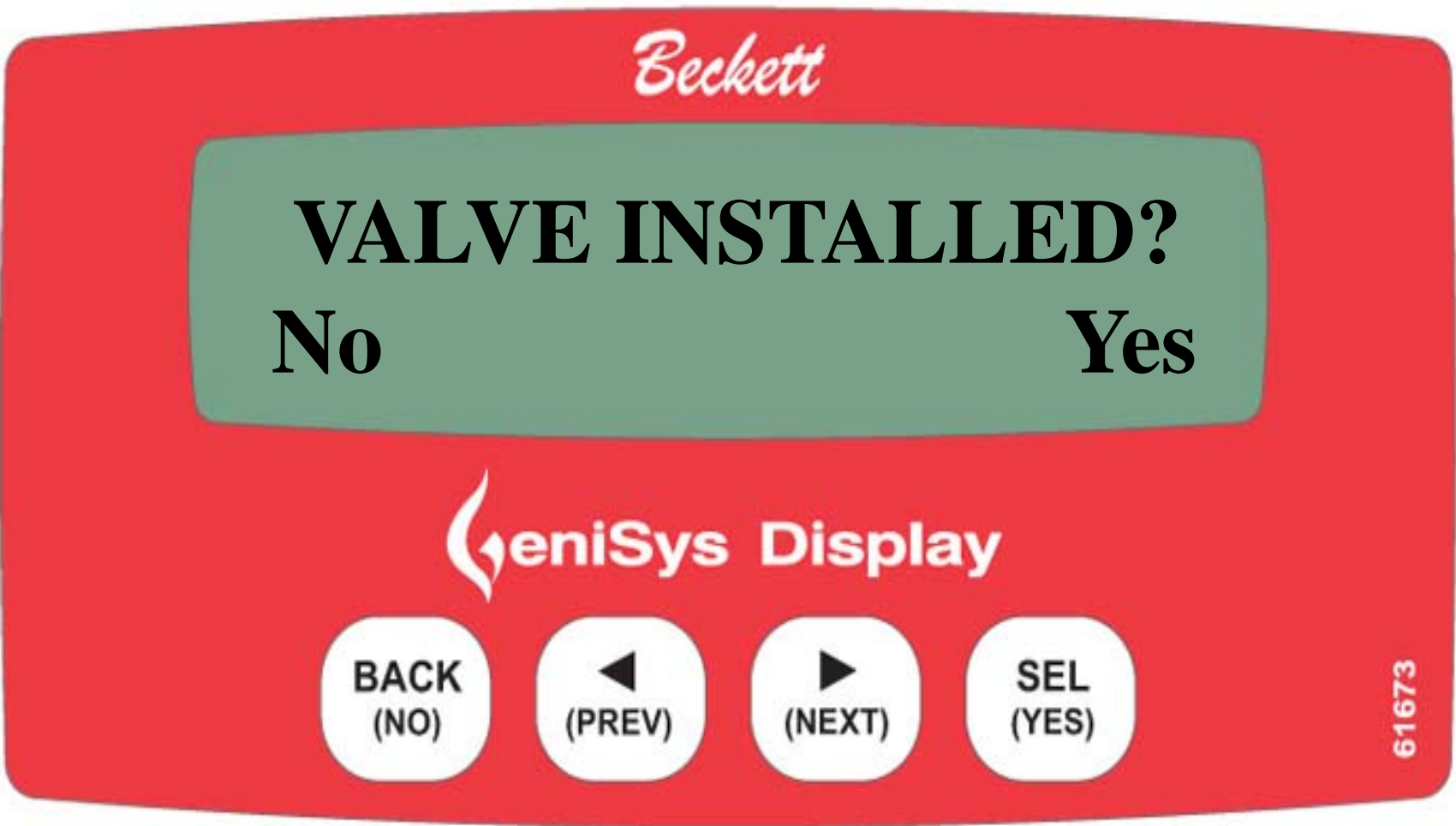
PRE TIME IS NOW SET, PRESS NEXT TO SET THE POST PURGE

Next slide

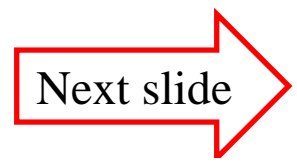


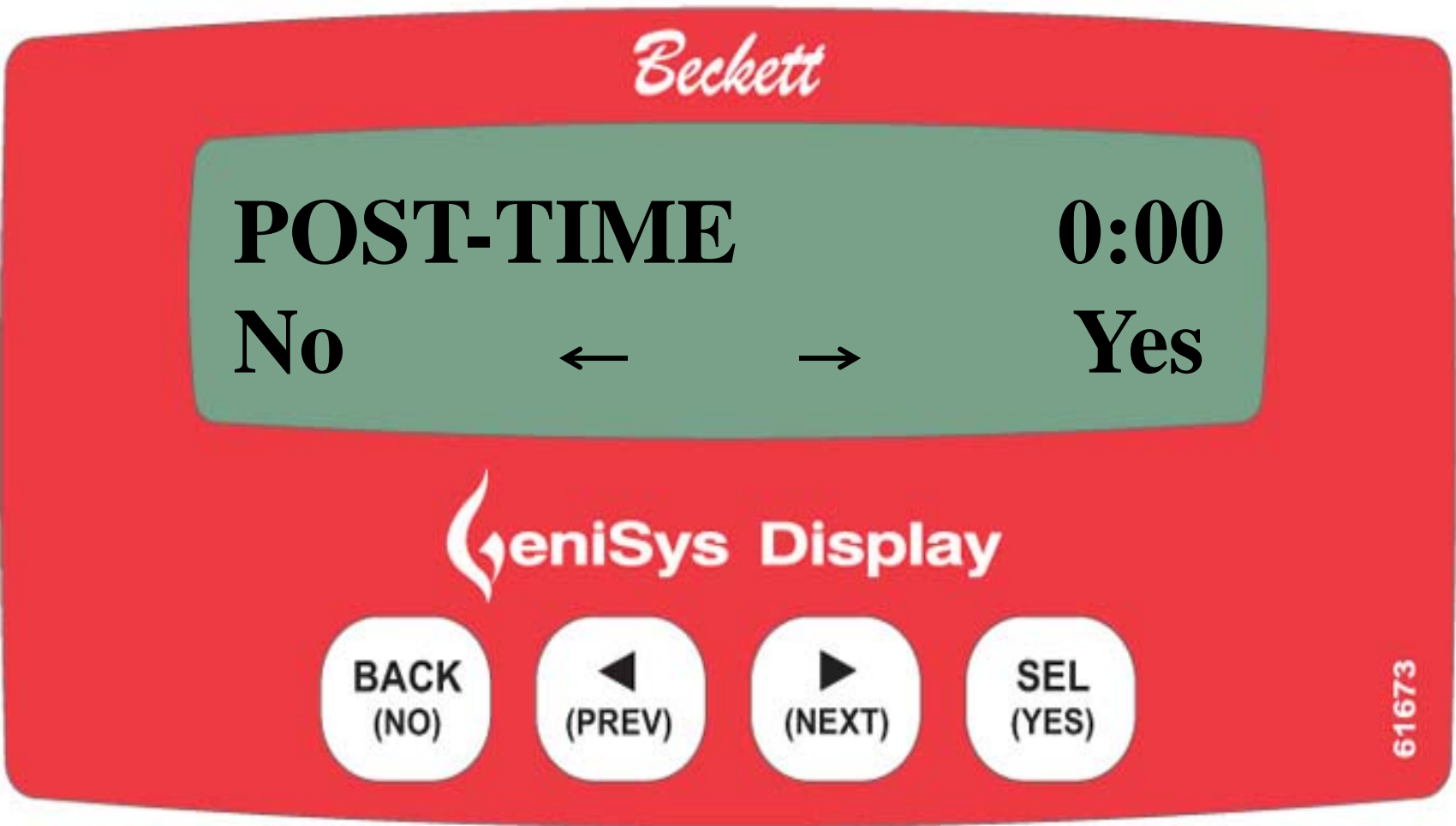
PRESS THE SEL/YES KEY

Next slide

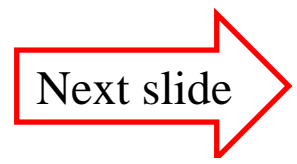


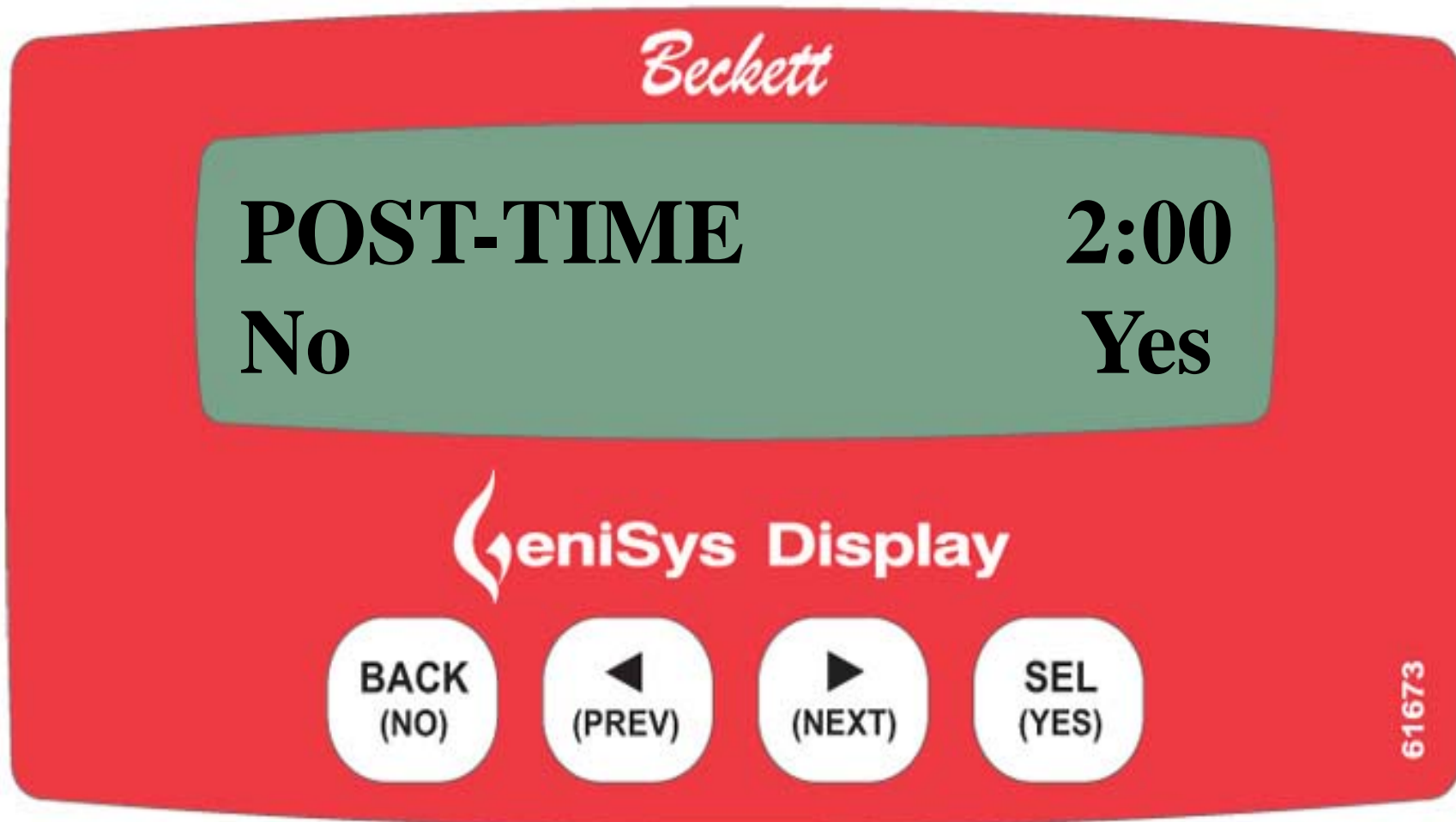
PRESS YES IF AN OIL VALVE OR CLEAN CUT PUMP IS INSTALLED





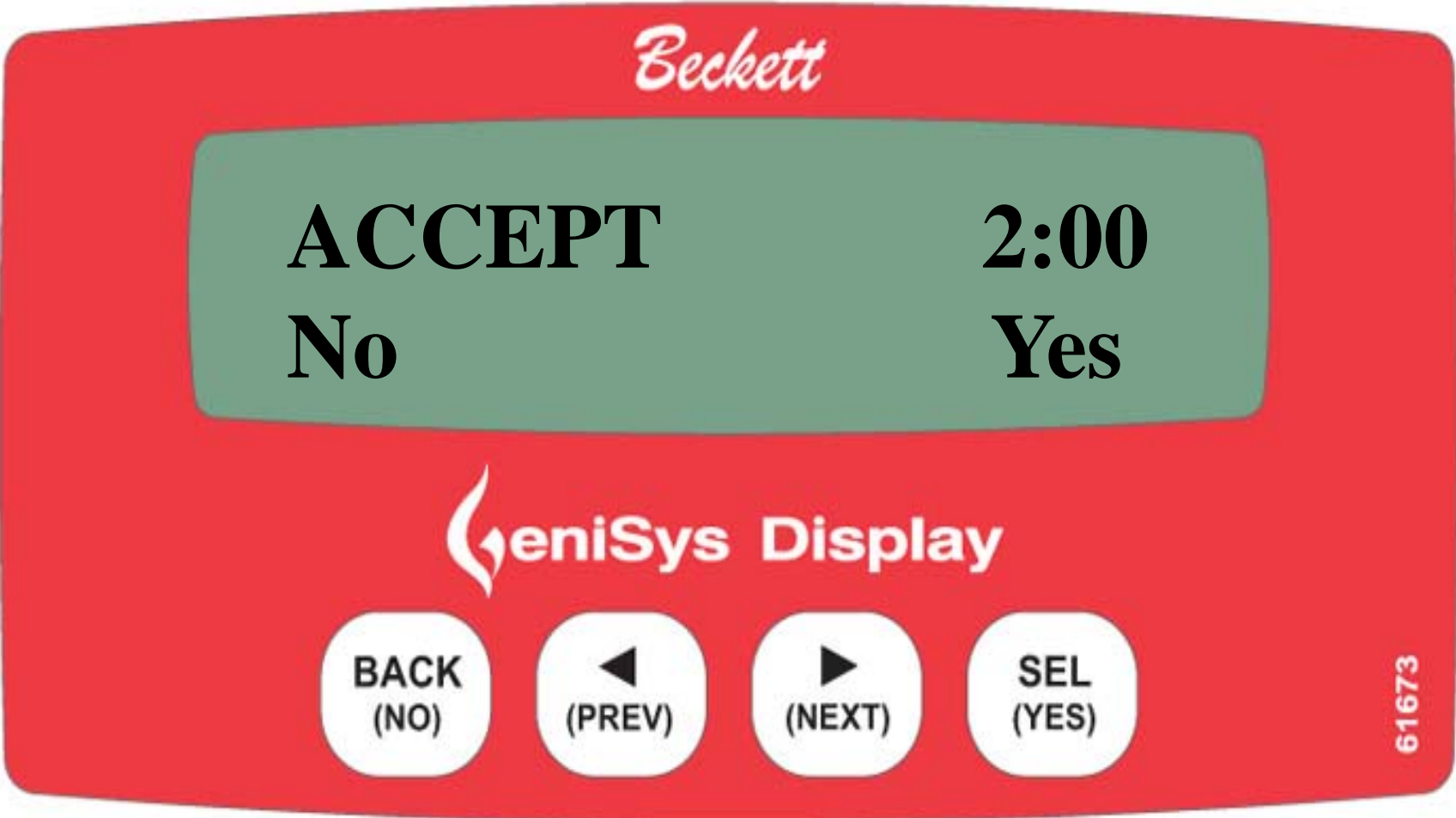
**PRESS THE NEXT KEY TO SET THE
POST PURGE TIMING**





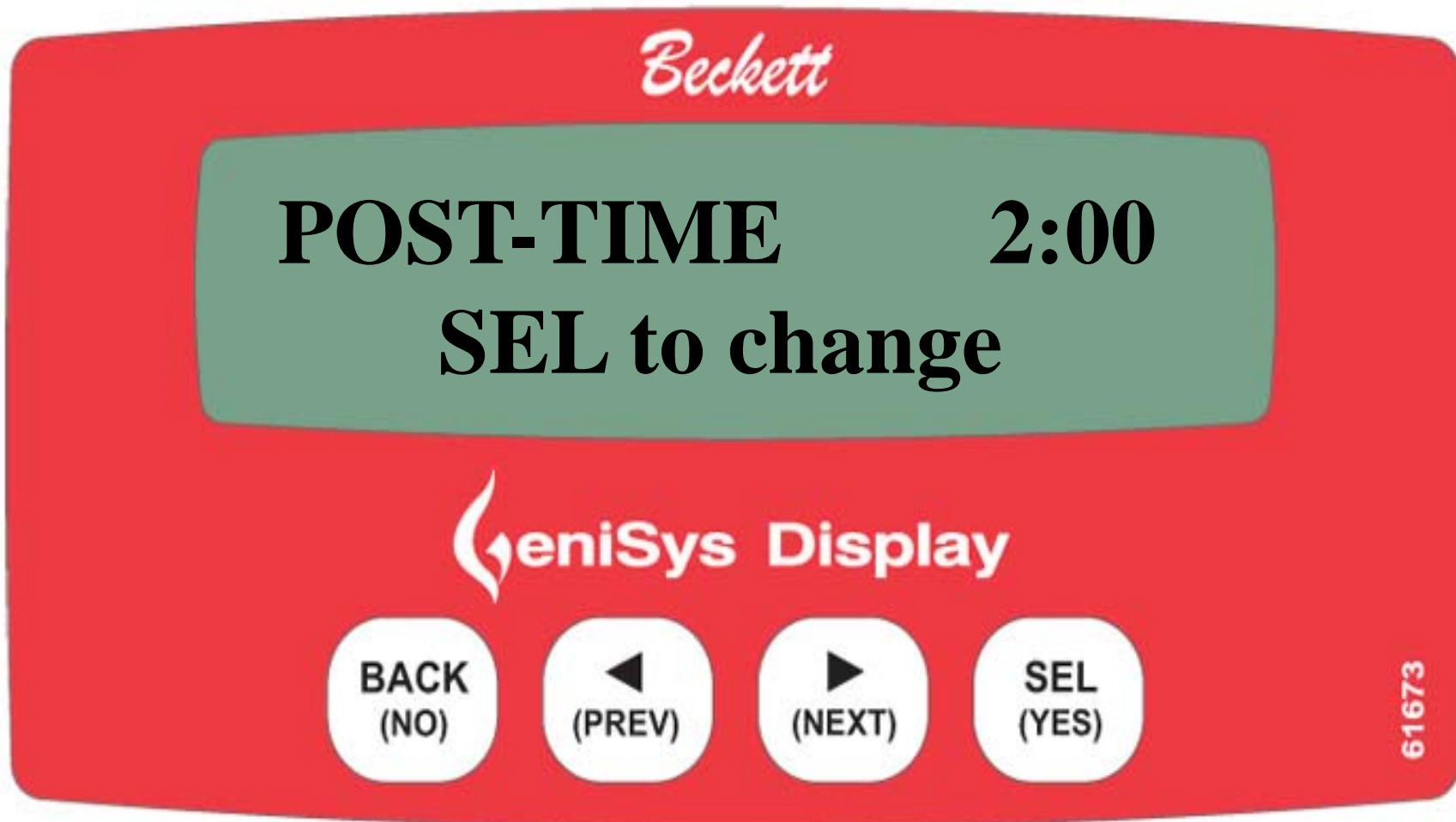
PRESS THE SEL/YES KEY

Next slide



ACCEPT BY PRESSING THE YES KEY AGAIN





POST TIME IS NOW SET PRESS THE BACK KEY TO EXIT