

BeckettLink Diagnostic and Configuration Tool

7700A0001U Instructions

Getting Started



BeckettLink Diagnostic and Configuration Tool



Overview

The 7700A BeckettLink[®] Diagnostic and Configuration Tool is designed for use with Beckett 7586 and 7590 gas ignition modules. The BeckettLink tool provides qualified service technicians with additional diagnostic information to help in the troubleshooting process. The information provided includes input voltage and flame signal strength, as well as cycle history and fault identification.

The BeckettLink can also be used to help qualified service technicians configure trial for ignition, pre-purge timings and lockout logic to match settings on controls being replaced.

The BeckettLink creates a local WiFi signal that can be used with the web browser on cell phones, tablets or laptops to view diagnostic and configuration information stored on the ignition control.

The exact information and the ability to configure the control will vary depending on the model number of the Beckett control.

WARNING Fire or Explosion Hazard



Can cause severe injury, death, or property damage.

When setting up a replacement control, the following must exactly match the settings of the control being replaced:

- Pre-purge Timing
- Trial for Ignition Timing
- Lockout Logic
- Flame Loss Logic

NOTICE

BeckettLink can only be used with Beckett gas ignition controls. Use with any other devices may cause damage to the BeckettLink or the device to which it is connected

NOTICE

DO NOT connect any cell phone, tablet or computer to the communications port. Any device other than BeckettLink or the 7710 Alarm Module connected to the com port will be damaged.

WARNING Professional Service Required



Incorrect use of this device to configure gas ignition controls could result in severe personal injury, death, or substantial property damage from explosion or fire.

Gas ignition controls must be installed, configured and put into operation only by a qualified individual or service agency that is:

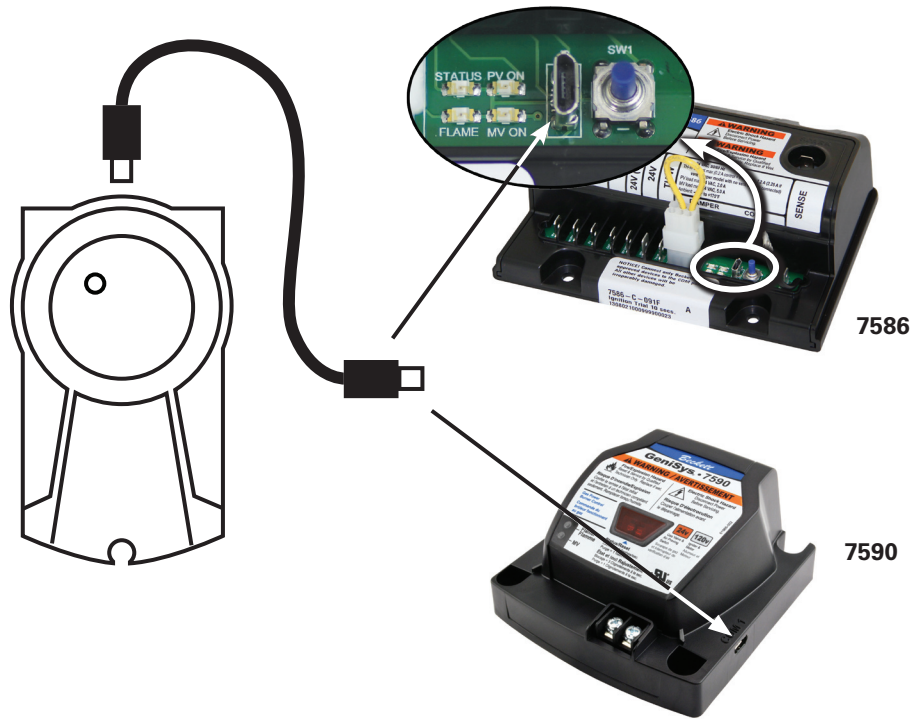
- Licensed or certified to install and provide technical service to gas heating systems.
- Experienced with all applicable codes, standards and ordinances.
- Responsible for the correct installation and commissioning of this equipment.

The installation must strictly comply with all applicable codes and authorities having jurisdiction and the latest revision of the National Fire Protection Association Standard or CSA Standard for the installation of gas controls in the appropriate gas appliance.

Regulation by these authorities take precedence over the general instructions provided in this installation sheet.

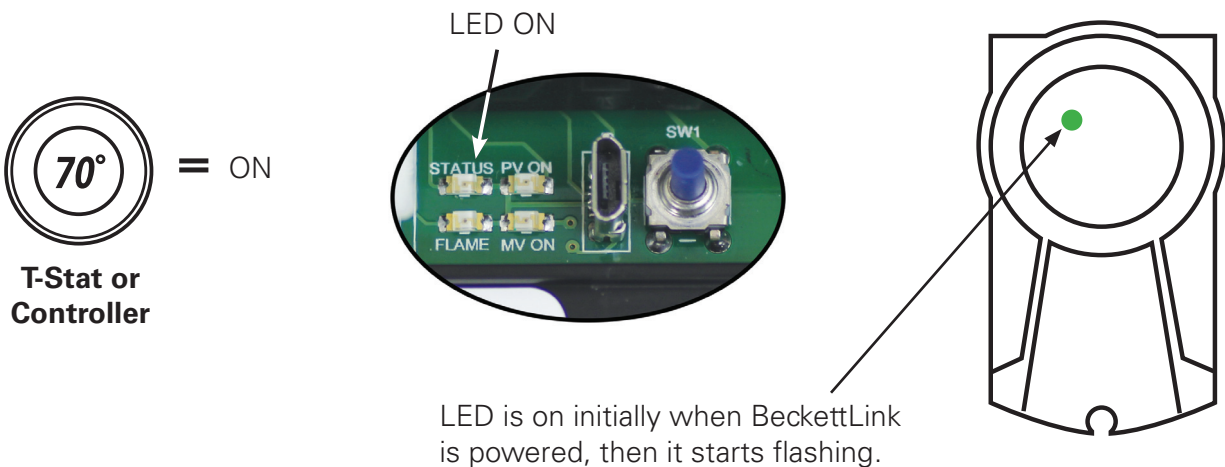
STEP 1 Setup

- Plug the supplied cable into the BeckettLink.
- Plug the other end into the Beckett gas ignition control.





STEP 2 Powering Up

- The ignition control must be powered for BeckettLink to work. Set thermostat or controller to call for heat. At least 1 LED on the ignition control should be on if there is a call for heat.



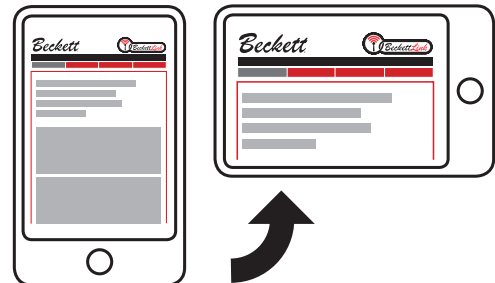
STEP 3 Connecting to BeckettLink

- LED starts Flashing = Communicating with control
- Open Settings icon ( or ) on your phone or tablet. Open WiFi networks and select BeckettLink_XXXX. The BeckettLink_XXXX will match the SSID printed on the BeckettLink label. No password required.
- Close settings and open the web browser on your phone or tablet.
- Type `http://192.168.1.3` or `http://beckettlink` in the address bar (or scan the QR code). Hit Enter or Go.
- Be sure to save this address as a favorite (BeckettLink) in your web browser.

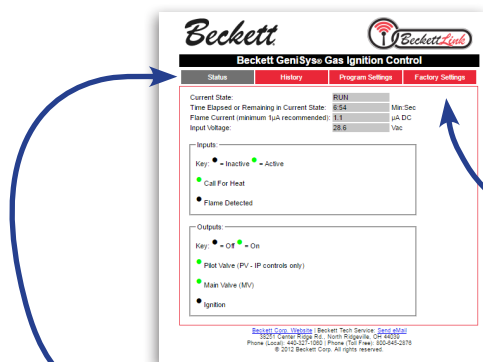


STEP 4 Displaying Pages

- When BeckettLink connects to your phone or tablet - the status page will open.
- The web page information displayed is specific to the type of control connected to the BeckettLink.
- Turning the phone sideways may make some pages easier to read. Use fingers to pinch or zoom.



STEP 5 Navigating the Pages



Navigate through pages by touching headings at top of page and scrolling up or down on the page.

- Status** Provides real-time information on the current state of the control.
- History** Provides diagnostic data on previous cycles and faults.
- Program Settings** This page is used to configure the control by matching timings, lockout logic, and flame loss logic to the control being replaced. Settings must match exactly the settings on the control replaced. Specific programming instructions are included with replacement Beckett ignition controls. Configuration is locked after 4 hours of operation.
- Factory Settings** Provides basic information on the control factory configuration.

Important Notes

- Some device and web browser combinations have difficulty in using a Wi-Fi connection that does not connect to the internet. If your device successfully connects to the BeckettLink but does not display the webpages, try these troubleshooting steps: “allow” the connection if your device gives a notification requiring it, use a different web browser, or temporarily turn off your phone’s mobile data.
- For Warranty or Product Information visit www.beckettcorp.com/product/beckettlink.
- BeckettLink will not transmit any information when the spark igniter in the control is active.
- BeckettLink can only link to one phone or tablet at a time.
- Beckett gas ignition controls can only have the timings and sequences configured during the first 4 hours of burner operation. After 4 hours of operation, the control configuration is locked. Some controls will have the configuration locked at the factory to meet specific application requirements.
- If your phone or tablet had automatically connected to a WiFi network prior to powering the BeckettLink, when power is removed from BeckettLink, your phone or tablet may automatically connect back to the existing WiFi network. If this happens, you will need to reconnect to the BeckettLink network in your settings. You could also choose to “forget” the existing network.
- The Troubleshooting and Product Information Link, the Send Email Link and the Beckett Corp. Website Link will not function while the phone or tablet is connected to BeckettLink. Disconnecting the BeckettLink device will allow the phone or tablet to access those links using cellular data or a standard WiFi connection.
- Any websites other than <http://192.168.1.3> or <http://BeckettLink> will not work while connected to the BeckettLink.

CAUTION

To satisfy FCC RF Exposure requirements for mobile and base station transmission devices, a separation distance of 8" (20cm) or more should be maintained between the antenna of this device and persons during operation. To ensure compliance, operation at closer than this distance is not recommended.

The antenna(s) used for this transmitter must not be co-located or operating in conjunction with any other antenna or transmitter.

This device complies with industry Canada license - exempt RSS standard(s). Operation is subject to the following two conditions: (1) This device may not cause interference, and (2) this device must accept any interference that may cause undesired operation of the device.



BeckettLink Product page
on www.beckettcorp.com

NOTICE

This equipment has been tested and found to comply with the limits for a Class B digital device, pursuant to part 15 of the FCC Rules. These limits are designed to provide reasonable protection against harmful interference in a residential installation. This equipment generates, uses and can radiate radio frequency energy, and if not installed and used in accordance with the instructions, may cause harmful interference to radio communications. However, there is no guarantee that interference will not occur in a particular installation. If this equipment does cause harmful interference to radio or television reception, which can be determined by turning the equipment off and on, the user is encouraged to try to correct the interference by one or more of the following measures:

- Reorient or relocate the receiving antenna.
- Increase the separation between the equipment and receiver.
- Connect the equipment into an outlet on a circuit different from that to which the receiver is connected.
- Consult the dealer or an experienced radio/TV technician for help.