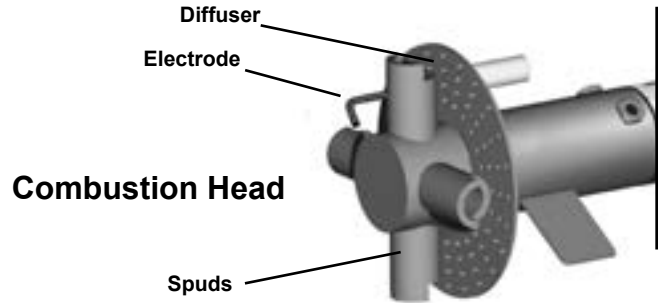
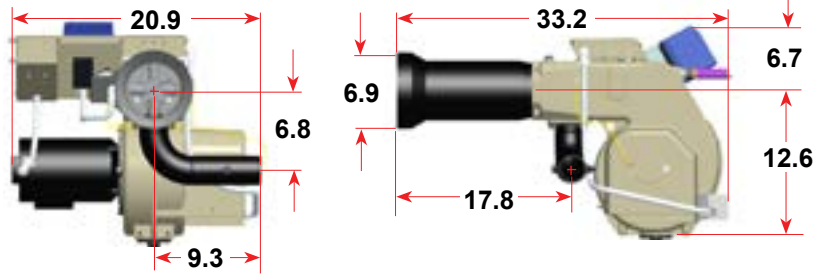


Overall Dimensions



Specifications

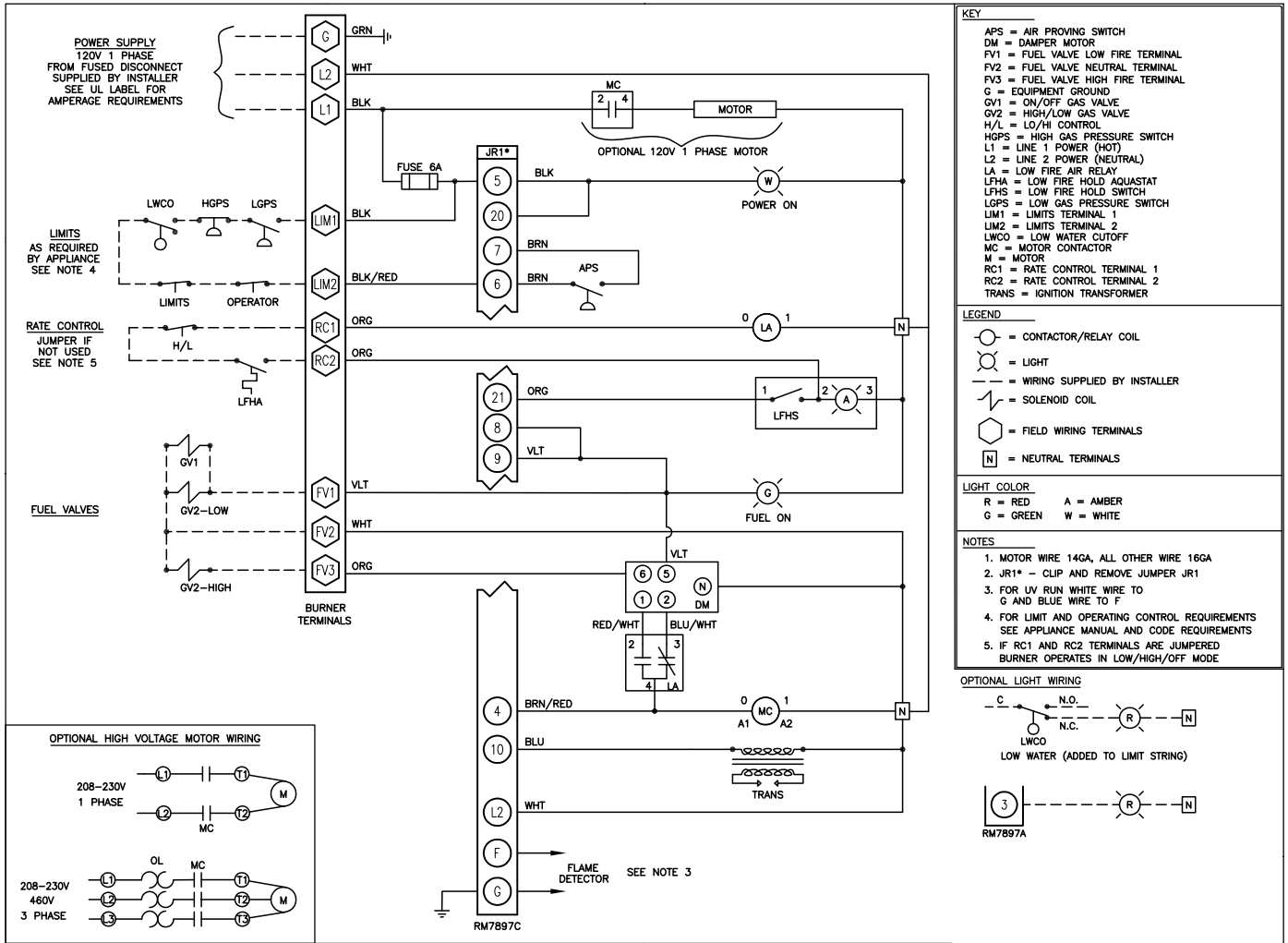
	USA	Canada
Input Firing Range[†]:		
High Fire (Max.)	2,700 MBH	2,300 MBH
High Fire (Min.)	1,300 MBH	1,300 MBH
Low Fire (Max.)	990 MBH	990 MBH
Low Fire (Min.)	550 MBH	550 MBH
Fuel:	Natural Gas: 0.6 Specific Gravity Typ. Propane (LP): 1.53 Specific Gravity Typ.	
Gas Train:	Standard: UL Listed / CSD-1 configuration Options: IRI, FM	
Gas Train Inlet Pressure:	Minimum: 3.5" WC* Maximum: 10 PSI	
Manifold to Furnace Pressure Drop:	Highest High Fire: 3.5" WC Lowest High Fire: 2.5" WC	
Firing Modes Available:	High/Low, Modulation	
Standard Flame Safeguard:	High / Low: RM7897C Modulation: RM7840L	
Flame Detector:	Standard: UV	
Airflow Proving Switch:	Standard	
Gas Pressure Switches:	Standard High and Low	
Ignition:	Direct Ignition of Main Flame	
Motor:	3/4 HP, 3450 RPM, 120 volt, 1 ph, 60 Hz 10.4 Amps @120 volt AC Optional Voltages: 208/230v, 1 ph, 60 Hz 208/230v, 3 ph, 60 Hz 460v, 3 ph, 60 Hz 575v, 3 ph, 60 Hz	
Weight:	145 lbs.	

Features

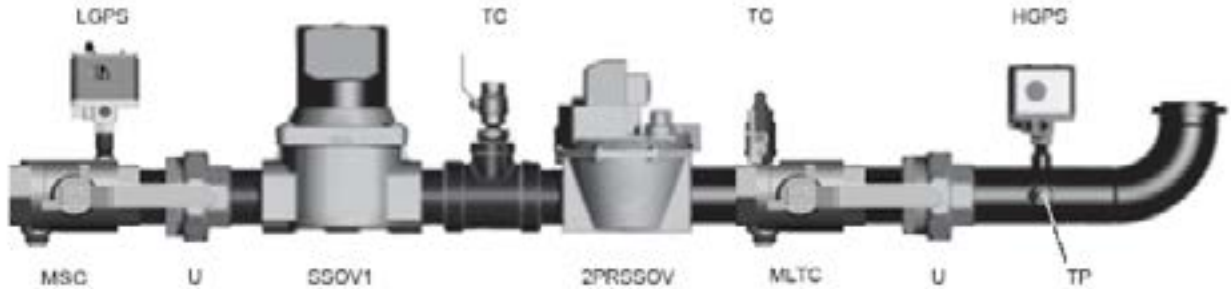
S - Standard O - Optional N/A - Not Available	
On/Off with Low Fire Start	N/A
Propane Restrictor ¹	O
Linkageless Low/High/Low or Low/High/Off	S
Modulation with Pressure/ Temperature Modulating Controller	O
Right or Left Side Gas Train Connection	S
Air Pressure Switch	S
Low Gas Pressure Switch	S
High Gas Pressure Switch	S
Main Shutoff Cock, Leak Test Cock, Test Connections, and Test Cocks	S
Direct Spark Ignition of Main Flame	S
Flame Safeguard with Flame Rod	O
Flame Safeguard with UV Sensor	S
Customized Electrical Cabinet ²	O
UL/CUL - CSD1 - Swiss Re ³	S
FM	O
IRI (old standard)	O
Power On - Fuel On, Indicator Light	S

*See manufacturer's nameplate settings for specific minimum gas pressure requirements.
[†]Canada High Fire rate is reduced to accommodate 25% reserve air.

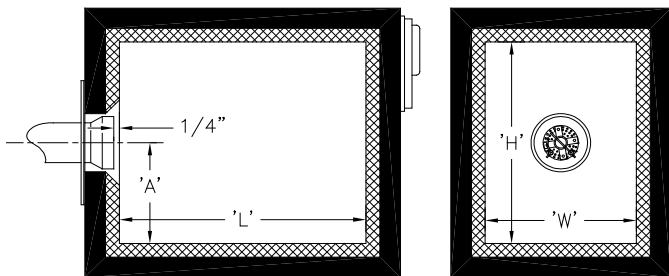
Typical Wiring Using Model RM7897C for High/Low Control (For Reference Only)



Gas Train Assembly (Typical Gas Train, other configurations are available)



Combustion Chamber Dimensions



Minimum Inside Dimensions (inches)				
Burner Model	Width 'W'	Height 'H'	Length 'L' at Min H & W*	Burner Head Centerline to floor 'A'
CG25.1S	19	20	45	9
CG25.2S	20	21	48	10
CG25.3S	21	22	50	10
CG25.4S	22	23	52	11
CG25.5S	23	25	55	11