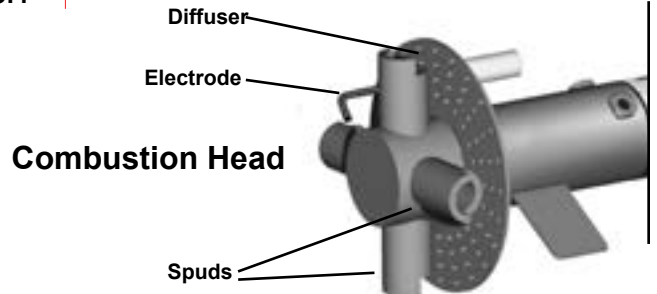
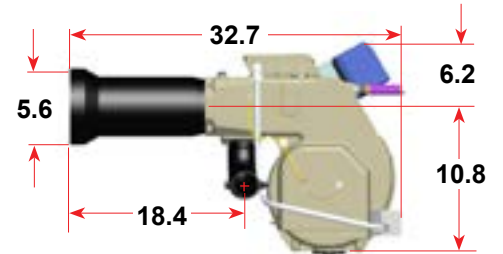
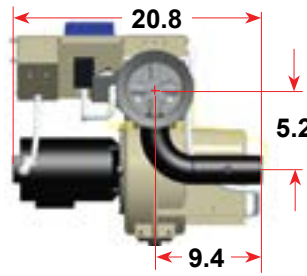


Overall Dimensions



Specifications

Input Firing Range†:	USA	Canada
High Fire (Max.)	1,500 MBH	1,370 MBH
High Fire (Min.)	800 MBH	800 MBH
Low Fire (Max.)	560 MBH	560 MBH
Low Fire (Min.)	350 MBH	350 MBH
Fuel:	Natural Gas: 0.6 Specific Gravity Typical Propane (LP): 1.53 Specific Gravity Typical	
Gas Train:	Standard: UL Listed / CSD-1 configuration Optional: IRI, FM	
Gas Train Inlet Pressure:	Minimum: 3.7" WC* Maximum: 10 PSI	
Manifold to Furnace Pressure Drop:	Highest High Fire: 3.7" WC Lowest High Fire: 2.7" WC	
Firing Modes Available:	Low Fire Start, High/Low, Modulation	
Standard Flame Safeguard:	Low Fire Start: RM7897A High / Low: RM7897C Modulation: RM7897C	
Flame Detector:	Standard: Flame Rod Optional: UV	
Airflow Proving Switch:	Standard	
Gas Pressure Switches:	Standard High and Low	
Ignition:	Direct Ignition of Main Flame	
Motor:	1/2HP; 3450 RPM; 120 volt, 1 ph, 60 Hz, 6.4 Amps @120 volt AC Optional Voltages: 208/230v, 1 ph, 60 Hz 208/230v, 3 ph, 60 Hz 460v, 3 ph, 60 Hz 575v, 3 ph, 60 Hz	
Weight:	125 lbs.	

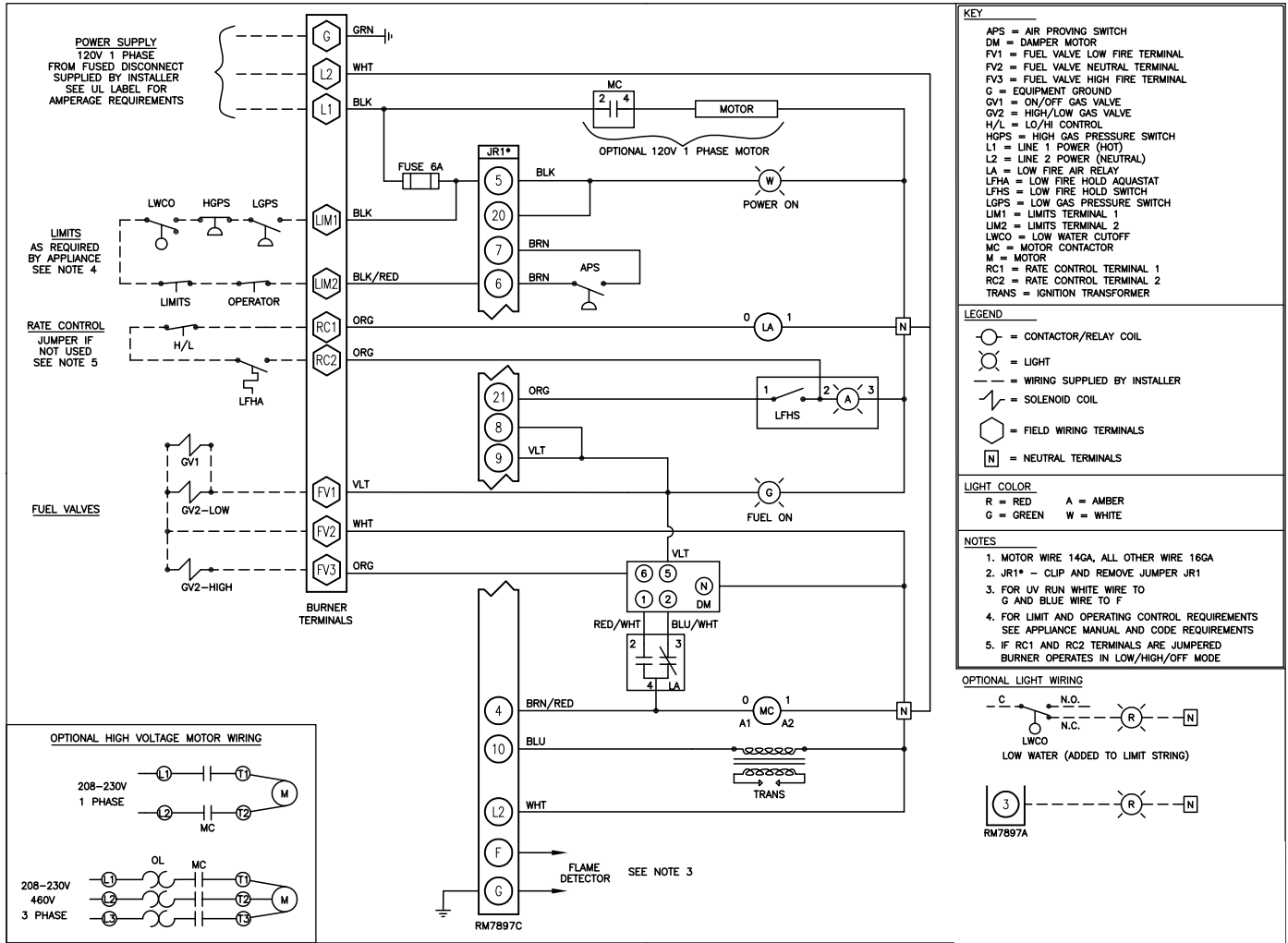
Features

S - Standard O - Optional N/A - Not Available	
On/Off with Low Fire Start	N/A
Propane Restrictor	O
Linkageless Low/High/Low or Low/High/Off	S
Modulation with Pressure/ Temperature Modulating Controller	O
Right or Left Side Gas Train Connection	S
Air Pressure Switch	S
Low Gas Pressure Switch	S
High Gas Pressure Switch	S
Main Shutoff Cock, Leak Test Cock, Test Connections, and Test Cocks	S
Direct Spark Ignition of Main Flame	S
Flame Safeguard with Flame Rod	O
Flame Safeguard with UV Sensor	S
Customized Electrical Cabinet	O
UL/CUL - CSD1 - Swiss Re	S
FM	O
IRI (old standard)	O
Power On - Fuel On, Indicator Light	S

*See manufacturer's nameplate settings for specific minimum gas pressure requirements.

† Canada High Fire rate is reduced to accommodate 25% reserve air.

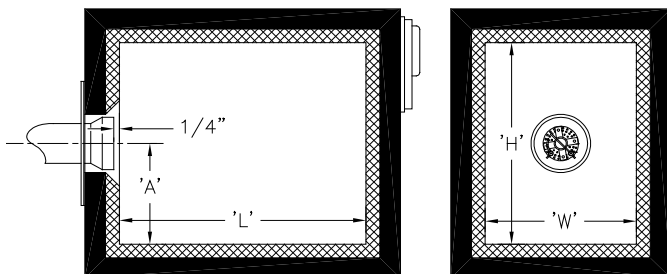
Typical Wiring Using Model RM7897C for High/Low Control (For Reference Only)



Gas Train Assembly (Typical Gas Train, other configurations are available)



Combustion Chamber Dimensions



Minimum Inside Dimensions (inches)				
Burner Model	Width 'W'	Height 'H'	Length 'L' at Min H & W*	Burner Head Centerline to floor 'A'
CG15.1S	15	16	42	7
CG15.2S	16	17	45	8
CG15.3S	17	18	47	8
CG15.4S	18	19	50	9