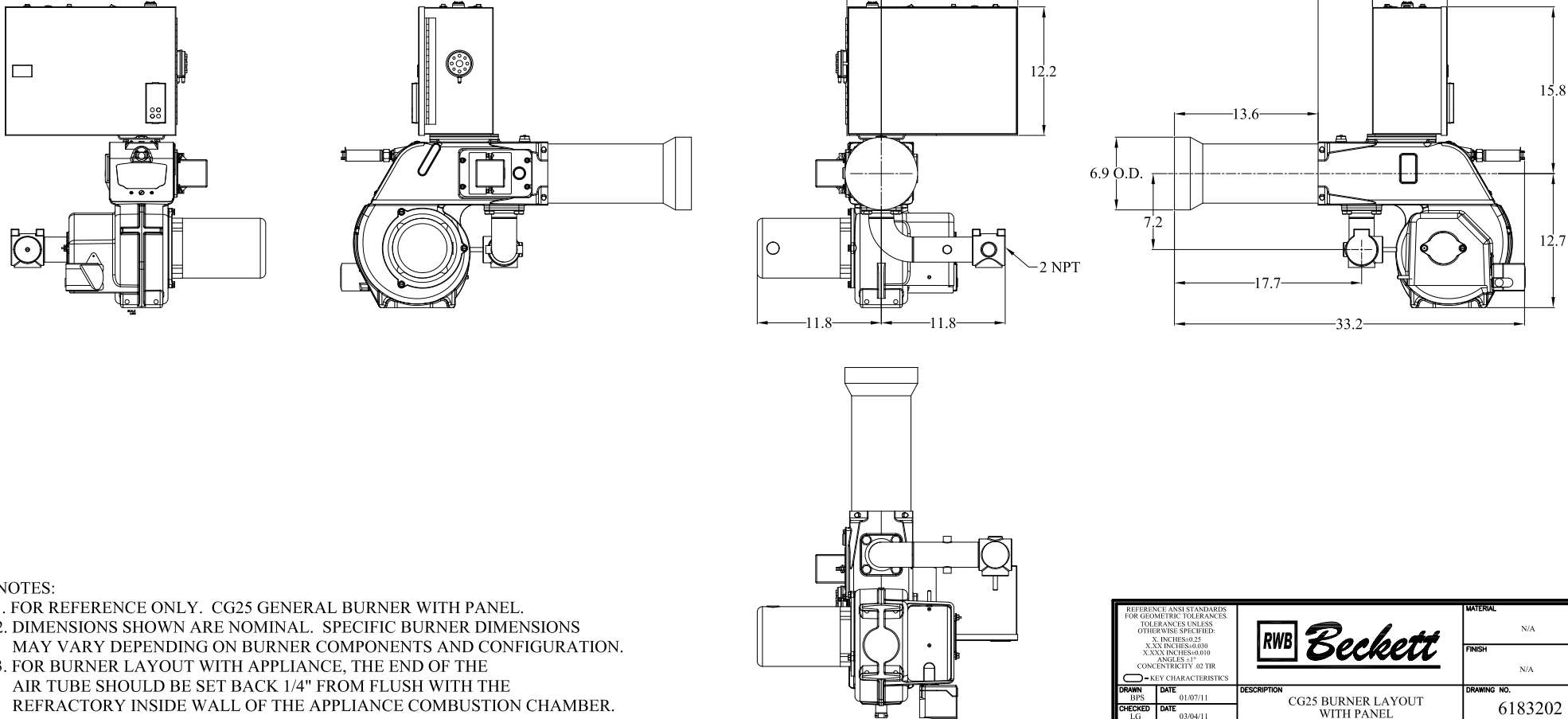


CONTROL NO.	REV.	DESCRIPTION	BY	DATE	APR
PCO-66966	0	PRODUCTION RELEASE	BPS	03/03/11	RC

DRAWING - RELEASED AND ACTIVE



- NOTES:
1. FOR REFERENCE ONLY. CG25 GENERAL BURNER WITH PANEL.
 2. DIMENSIONS SHOWN ARE NOMINAL. SPECIFIC BURNER DIMENSIONS MAY VARY DEPENDING ON BURNER COMPONENTS AND CONFIGURATION.
 3. FOR BURNER LAYOUT WITH APPLIANCE, THE END OF THE AIR TUBE SHOULD BE SET BACK 1/4" FROM FLUSH WITH THE REFRACTORY INSIDE WALL OF THE APPLIANCE COMBUSTION CHAMBER.

<small>REFERENCE ANSI STANDARDS FOR GEOMETRIC TOLERANCES. TOLERANCES (UNLESS OTHERWISE SPECIFIED): X INCHES=0.25 XXX INCHES=0.030 XXX INCHES=0.010 ANGLES ±1° CONCENTRICITY 0.02 TIR</small>			MATERIAL		N/A
			FINISH		N/A
			DRAWING NO.		6183202
DRAWN BPS	DATE 01/07/11	<small>DESCRIPTION</small> CG25 BURNER LAYOUT WITH PANEL		<small>PURCH CODE</small> MAKE	
CHECKED LG	DATE 03/04/11				
APPROVED RC	DATE 03/03/11				
		<small>DRAWING SIZE</small> C		<small>SCALE</small> NTS	<small>SHEET</small> 1 OF 1