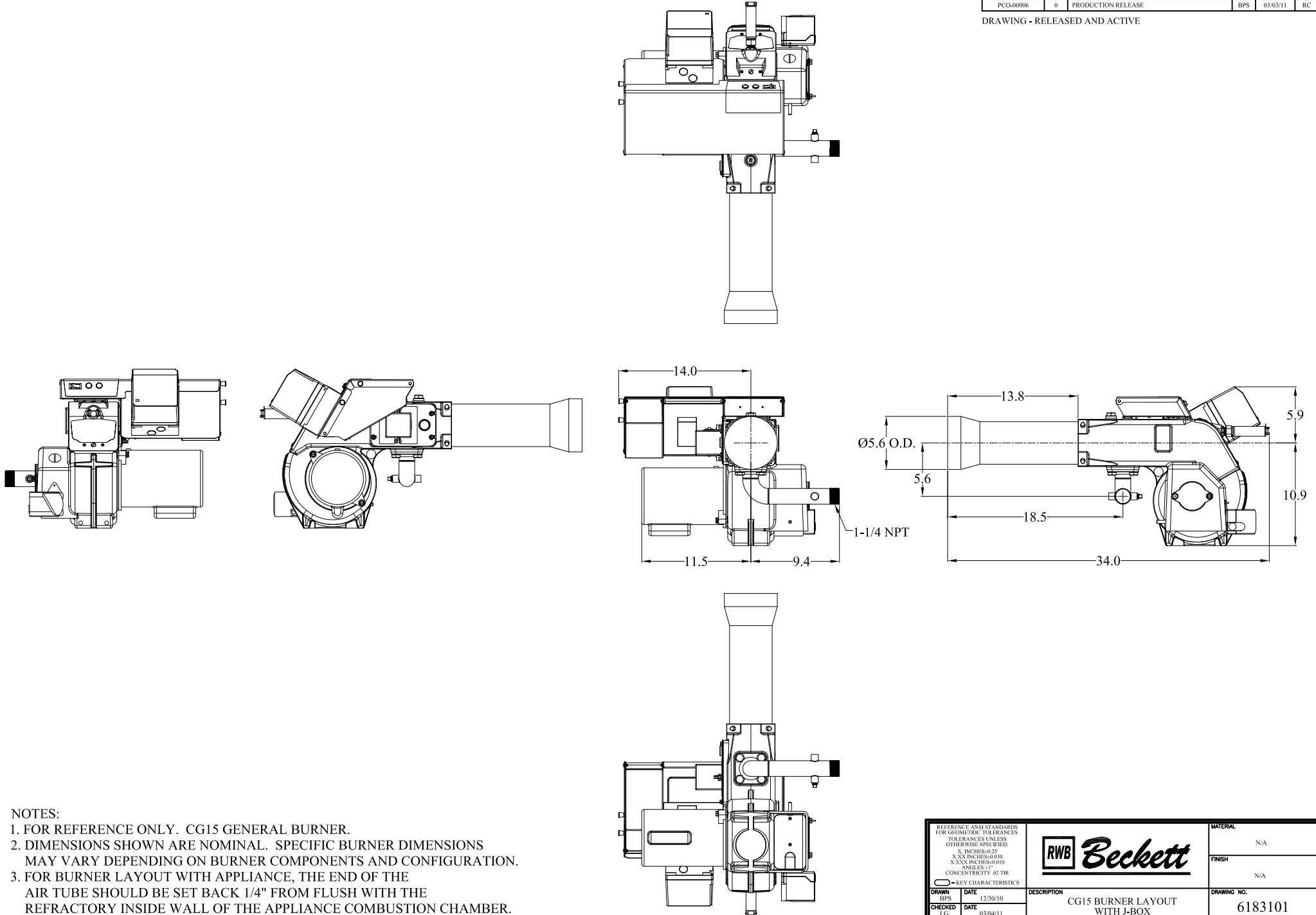


CONTROL NO.	REV.	DESCRIPTION	BY	DATE	APR
PCO-6996	0	PRODUCTION RELEASE	BPS	03/03/11	RC

DRAWING - RELEASED AND ACTIVE



NOTES:

1. FOR REFERENCE ONLY. CG15 GENERAL BURNER.
2. DIMENSIONS SHOWN ARE NOMINAL. SPECIFIC BURNER DIMENSIONS MAY VARY DEPENDING ON BURNER COMPONENTS AND CONFIGURATION.
3. FOR BURNER LAYOUT WITH APPLIANCE, THE END OF THE AIR TUBE SHOULD BE SET BACK 1/4" FROM FLUSH WITH THE REFRACTORY INSIDE WALL OF THE APPLIANCE COMBUSTION CHAMBER.

DRAWN		DATE	DESCRIPTION	MATERIAL	
BPS		12/30/10			CG15 BURNER LAYOUT WITH I-BOX
CHECKED	LG	03/04/11	FINISH	N/A	
APPROVED	RC	03/03/11	PURCH CODE MAKE	DRAWING SIZE SCALE	DRAWING NO. 6183101
				NTS	SHEET 1 OF 1

