

INSTALLATION INSTRUCTIONS

5207301U — UNIVERSAL BURNER COVER (AF, AFG, CF375)

⚠ WARNING Professional Service Required



Incorrect installation, adjustment, and use of this burner could result in severe personal injury, death, or substantial property damage from fire, carbon monoxide poisoning, soot or explosion.

Please read and understand the manual supplied with this equipment. This equipment must be installed, adjusted and put into operation only by a qualified individual or service agency that is:

1. Licensed or certified to install and provide technical service to oil heating systems.
2. Experienced with all applicable codes, standards and ordinances.
3. Responsible for the correct installation and commission of this equipment.
4. Skilled in the adjustment of oil burners using combustion test instruments.

The installation must strictly comply with all applicable codes, authorities having jurisdiction and the latest revision of the National Fire Protection Association Standard for the installation of Oil-burning Equipment, NFPA 31 (or CSA B139 and B140 in Canada). Regulation by these authorities take precedence over the general instructions provided in this installation manual.

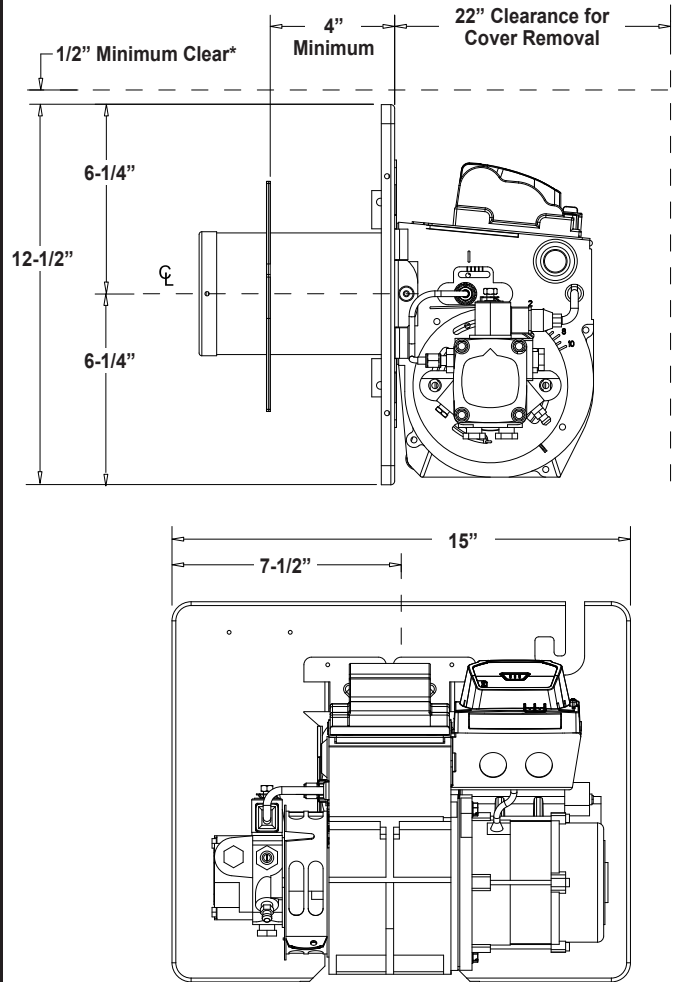
⚠ WARNING Electrical Shock Hazard



Electrical shock can cause severe personal injury or death.

Disconnect electrical power before installing or servicing the burner.

Figure 1



*3" Clearance recommended for oil supply line.

Notice Special Requirements

Figure 1 shows the required clearances around the burner for a successful and easy cover installation.

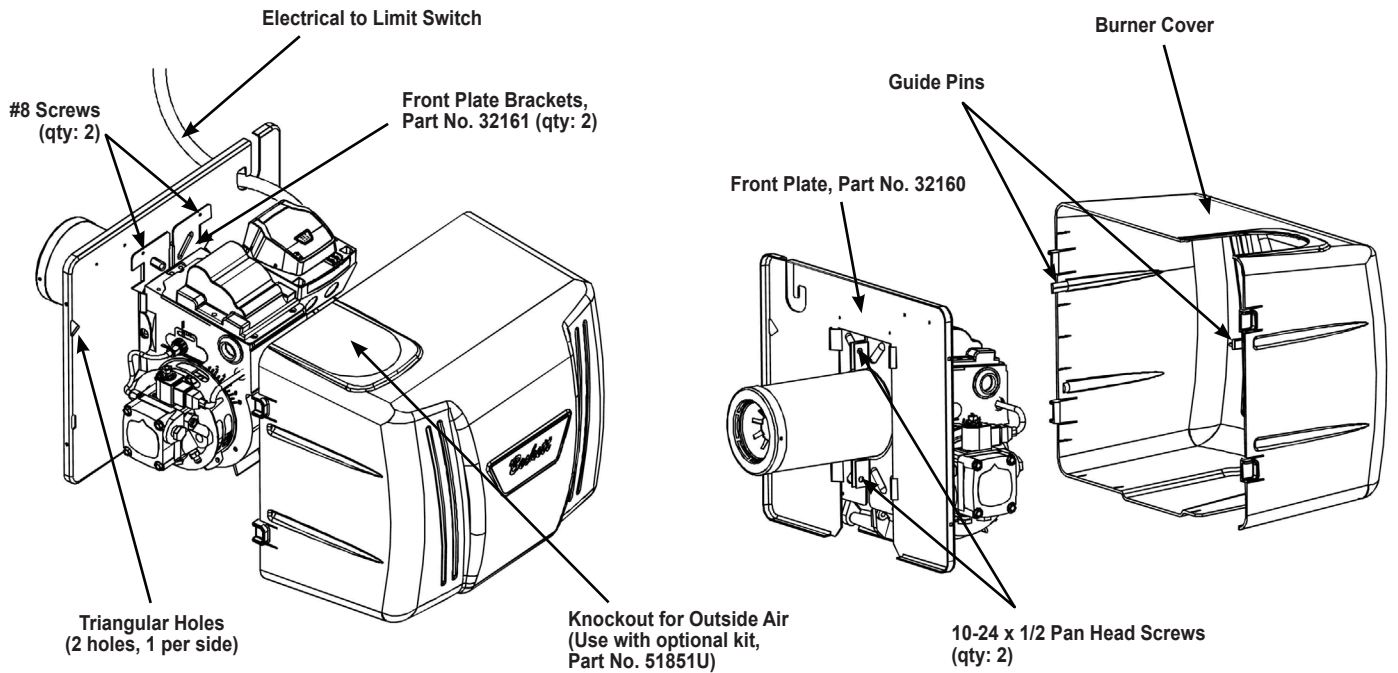
System Installation Requirements (Refer to **Figure 3**)

Review the existing oil lines. They must be installed so that they will pass out through the slot in the bottom of the cover. If they do not, they must be removed and reinstalled later.

Preparing to Install the Cover (Refer to **Figure 2**)

1. Position Front Plate Brackets, Part Number 32161 as shown so that they fit against the burner chassis and wrap around existing square flange.
2. Install two screws, (Phillips pan head, 10-24 x 1/2"), one from the left and one from the right. (Note: Do not over tighten. Brackets do not have to touch.).
3. Slide Front Plate down through guide tabs on front plate brackets until fully seated against them. The top attachment screw holes should line up. (Note: Move the electrical cord or conduit out of the way while doing this).
4. Install two top attachment screws, (Hex #8 x 7/16").

Figure 2



Cover Installation

1. Route the conduit into the 'J' channel on the front plate.
2. To install the cover, place the guide pins through the triangular holes in the cover mounting plate and snap the latches over the edge of the mounting plate.
3. To latch the bottom of the cover, slightly pull on the latch and insert the small guide tabs in to the cover and snap the latches over the outside edge.

Reinstalling the Oil Lines (Refer to *Figure 3*)

- If the oil lines were removed prior to installation as mentioned previously, then they must be reinstalled.
- Install a fusible handled valve into the pump as required by local codes and ordinances.
- Direct and position the oil line(s) so that it will pass through the slot in the bottom of the cover when the cover is installed.
- Use pipe fittings, flare fittings, or flexible hoses approved for use in the oil supply system. Do not use compression fittings.

Restarting the Burner

Restart the burner per Beckett burner installation instruction. Install the cover onto front plate assembly. Check combustion. Make all necessary adjustments to produce proper results with the cover installed.

Figure 3

